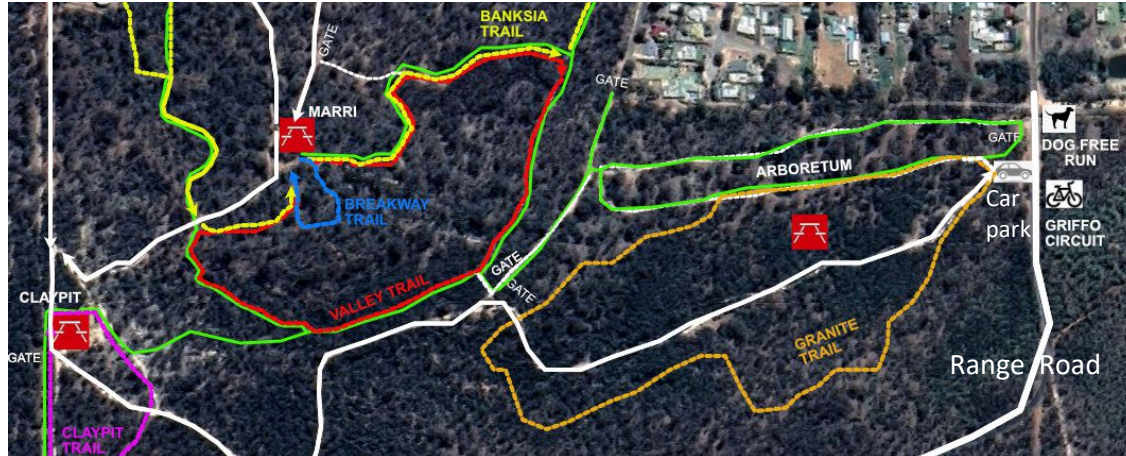


NARROGIN ARBORETUM

The Narrogin arboretum was one of more than 50 demonstration plantings established by the then Forests Department, throughout the wheatbelt, in the 1950's and 1960's. The arboreta were developed to evaluate a range of local, regional, Australian and overseas species that were thought to have promise for planting in the wheatbelt and goldfields, with a focus on species for quality timber, dust control and for windbreaks.

The Narrogin arboretum, smaller than most, was added to over several years as new species became available, with the last trees being planted in 1969. Some species have prospered. Others have not.

Since the mid 1980's the arboretum became neglected and overgrown until the Friends of Foxes Lair took on the project in 2002. Regrowth and rubbish were removed, with the remaining trees being pruned and pegged. New species are being added including sandalwood trees on the south side of the Granite Car park.



1 <i>Cupressus arizonica</i> Arizona cypress	24 <i>Eucalyptus erythronema</i> red-flowered mallee	46 47 <i>Eucalyptus stricklandii</i> Stricklands gum	74 <i>Eucalyptus campaspe.</i> silver gimlet
2 <i>Callitris calcarata</i> white cypress pine	25-27 <i>Eucalyptus occidentalis</i> flat-topped yate	48 <i>Pinus halopensis</i> Aleppo Pine	75 spare
3 <i>Casuarina glauca</i> swamp sheoak	28 <i>Corymbia citriodora</i> lemon-scented gum	49-51 <i>Eucalyptus capillosa</i> eastern white gum	76 <i>Eucalyptus tetraptera</i> square-fruited mallee
4 <i>Eucalyptus stricklandii</i> Stricklands gum	29 <i>Eucalyptus camaldulensis</i> river gum	52 <i>Eucalyptus ebbanoensis</i> sandplain mallee	77 <i>Eucalyptus tenera</i> glazed mallee
6-10 <i>Eucalyptus longicornis</i> red morrel	30 <i>Eucalyptus kondininensis</i> Kondinin blackbutt	53 <i>Eucalyptus macrocarpa</i> mottlecah	78 79 <i>Eucalyptus kochii</i> subsp. <i>kochii.</i> oil mallee
11 <i>Casuarina glauca</i> swamp sheoak	31 <i>Corymbia citriodora</i> Lemon-scented gum	54 <i>Eucalyptus megacornuta</i> warted yate	80 <i>Eucalyptus spathulata</i> subsp. <i>spathulata.</i> swamp mallet
12-13 <i>Eucalyptus largiflorens</i> black box	32	55 <i>Callitris calcarata</i> white cypress pine	81 82 <i>Eucalyptus kondininensis</i> Kondinin blackbutt
14 <i>Eucalyptus loxophleba.</i> York gum	33 <i>Eucalyptus kondininensis</i> Kondinin blackbutt	56 57 <i>Eucalyptus transcontinentalis.</i> redwood	83 <i>Eucalyptus orthostemons</i> diverse mallee
15 <i>Casuarina glauca</i> swamp sheoak	34 <i>Eucalyptus stricklandii</i> Stricklands gum	58-61 <i>Eucalyptus urna</i> merriit	84 <i>Eucalyptus argyphaea</i> silver mallet
16-17 <i>Eucalyptus salmonophloia</i> salmon gum	35 36 <i>Eucalyptus astringens</i> brown mallet	62 <i>Eucalyptus</i> "torwood	85 <i>Eucalyptus loxophleba.</i> York gum
18 <i>Casuarina glauca</i> swamp sheoak	37-40 <i>Eucalyptus platypus</i> moort	63 <i>Eucalyptus salubris</i> gimlet	86-88 <i>Eucalyptus myriadena</i> Small-fruited gum
19 <i>Eucalyptus salubris.</i> gimlet	41 <i>Eucalyptus astringens</i> brown mallet	64-66 <i>Eucalyptus kochii</i> subsp. <i>plenissima.</i> oil mallee	89-93 <i>Eucalyptus gomphocephala.</i> tuart
20 <i>Eucalyptus kondininensis</i> Kondinin blackbutt	42 <i>Callitris preissii</i> Rottnest Island Pine	67 <i>Acacia microbotrya</i> manna wattle	94 <i>Pinus canariensis</i> Canary Island pine
21 <i>Casuarina glauca</i> swamp sheoak	43 <i>Eucalyptus melliodora</i> yellow box	68 <i>Pinus pinea</i> stone pine	95 <i>Eucalyptus loxophleba.</i> York gum
22, 23 <i>Eucalyptus sargentii</i> salt river gum	44 45 <i>Eucalyptus loxophleba</i> York gum	69-73 <i>Eucalyptus yilgarnensis.</i> Yorrel	96 <i>Melaleuca eleuterostachya</i>

98 -103 <i>Eucalyptus melliodora</i> . yellow box	144 <i>Eucalyptus orthostemon</i> diverse mallee	177-179 <i>Acacia pendula</i>	217-220 <i>Eucalyptus maculata</i> spotted gum
104 105 <i>Eucalyptus cernua</i> red-flowered moort	145 <i>Pinus halopensis</i> Aleppo pine	180 Bottlebrush	221 222 <i>Eucalyptus globulus</i> Tasmanian blue gum
106 <i>Pinus canariensis</i> Canary Island pine	146 <i>eucalyptus pluricalis</i> <i>subsp. porphyrea</i> purple-leaved mallee	181 182 <i>Eucalyptus lesoueffii</i> goldfields blackbutt	223 <i>Allocasuarina huegeliana</i> rock sheoak
107- 109 <i>Eucalyptus wandoo</i> x <i>Eucalyptus astringens</i> hybrid	147 <i>Corymbia calophylla</i> var. <i>rosea</i> . red-flowering gum	183 <i>Corymbia calophylla</i> . marri	224 <i>Eucalyptus rhodantha</i> rose mallee
110 111 <i>Pinus halopensis</i> Aleppo pine	148 <i>Pinus halopensis</i> . Aleppo pine	184 <i>Eucalyptus stoateii</i> pear-fruited mallee	225 <i>Eucalyptus decurva</i> slender mallee
112 <i>Pinus canariensis</i> Canary Island pine	149 <i>Eucalyptus caesia</i> . silver princess	185-187 <i>E. desmondensis</i> Desmond mallee	226-229 <i>Eucalyptus macrandra</i> river yate
113-115 <i>Eucalyptus depauperate</i> Mt Madden mallee	150 <i>Eucalyptus cinerea</i> Argyle apple	189-193 <i>Eucalyptus grossa</i> coarse-leaved mallee	230 <i>Eucalyptus sideroxylon</i> ironbark
116 117 <i>Pinus halopensis</i> Aleppo pine	151 <i>Eucalyptus megacornuta</i> warted yate	194-199 <i>Eucalyptus leptopoda</i> subsp. <i>arctata</i> . Merredin mallee	231 <i>Eucalyptus aspratilis</i> soak yate
118 <i>Pinus canariensis</i> Canary Island pine	152 <i>Eucalyptus orthostemon</i> diverse mallee	200-203 <i>Eucalyptus preissiana</i> bell-fruited mallee	232 <i>Eucalyptus sideroxylon</i> ironbark
119 120 <i>Eucalyptus</i> "torwood"	153 <i>Pinus halopensis</i> . Aleppo pine	204 <i>Eucalyptus kingsmillii</i> Kingsmills mallee	233 <i>Corymbia calophylla</i> marri
121- 123 <i>Pinus halopensis</i> Aleppo pine	154 <i>Eucalyptus spathulata</i> swamp mallet	205 <i>E. pyriformis</i> Dowerin rose	234-237 <i>Eucalyptus ebbanoensis</i> sandplain mallee
124 <i>Pinus canariensis</i> Canary Island pine	155-157 <i>Eucalyptus leucoxylon</i> yellow gum	206 <i>Corymbia calophylla</i> . marri	238 <i>Eucalyptus lane-poolei</i> salmonbark wandoo
125 126 <i>Eucalyptus arachnaea</i> Black-stemmed mallee	158 <i>Unknown</i>	207 <i>Eucalyptus tetraptera</i> square-fruited mallee	239 <i>Corymbia calophylla</i> marri
127 -129 <i>Pinus halopensis</i> Aleppo pine	159-163 <i>Eucalyptus spathulata</i> swamp mallet	208 <i>E. pyriformis</i> Dowerin rose	240 <i>Eucalyptus accedens</i> powderbark
130-135 <i>Eucalyptus cladocalyx</i> sugar gum	164-166 <i>Eucalyptus kochii</i> sens. lat. Oil mallee	209-213 <i>E. crucis</i> subsp. <i>crucis</i> Southern Cross mallee	241 <i>Eucalyptus lane – poolei</i> salmonbark wandoo
136-138 <i>Pinus halopensis</i> Aleppo pine	167 168 <i>Eucalyptus sideroxylon</i> red ironbark	214 <i>Eucalyptus pluricalis</i> <i>subsp. porphyrea</i> purple-leaved mallee	242 <i>Acacia microbotrya</i> manna wattle
139 <i>Eucalyptus erythronema</i> red-flowered mallee	169 <i>Pittosporum angustifolium</i> native apricot	215 spare	243 <i>Eucalyptus megacornuta</i> . warty yate
140 141 <i>Pinus halopensis</i> Aleppo pine	170-175 <i>Eucalyptus decipiens</i> moit	216 <i>Eucalyptus kruseana</i> bookleaf mallee	244-247 <i>Eucalyptus leptophylla</i> . red mallee
			248-250 <i>Eucalyptus acmenoides</i> tallow wood

The arboretum was originally laid out as one species per row; 6 seedlings on a 5 x 5m spacing. Over time, failed species were replaced (though not always with the same species) and at some stage; a buffer was planted on three sides.

The best starting point is from the granite carpark. The tree numbers start at eastern end, with the pegs being located on the southern side of the tree.