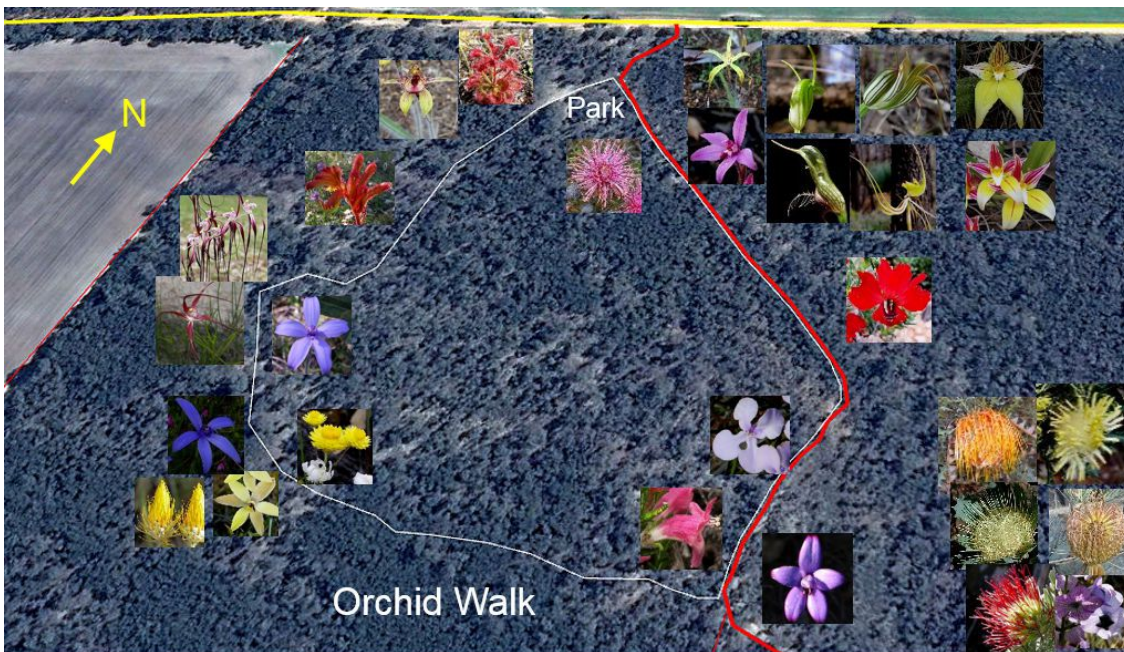
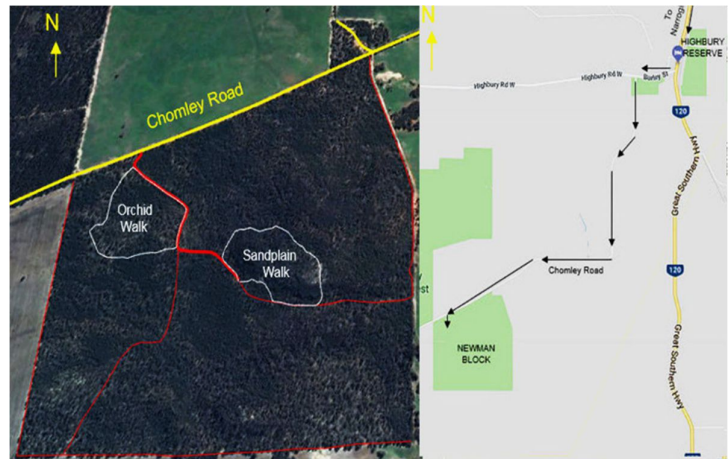




# NEWMAN BLOCK

Great Wildflowers  
July to October

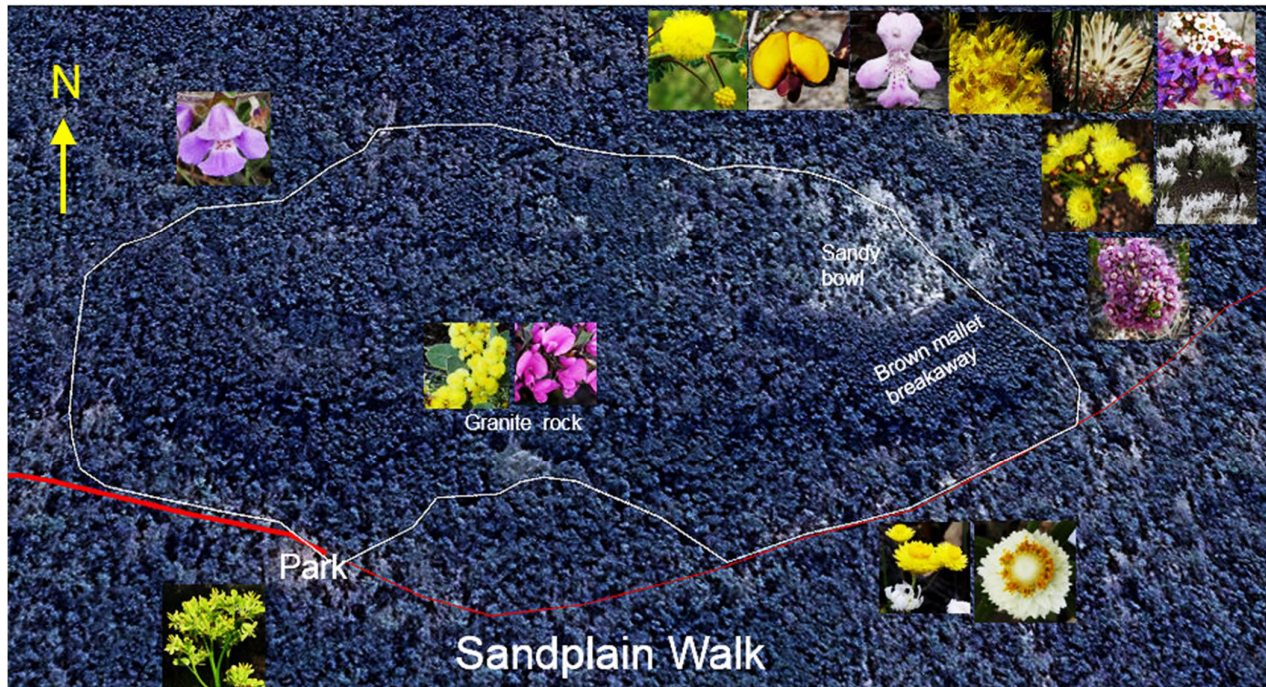
Located 24km south-west of Narrogin, this is a good hiking, wildflower and bird watching place. The 8km road from Highbury to the reserve is gravel, and internal roads are narrow graded tracks. This is a great reserve for bushwalkers and cyclists who can experience the variation in the landscape and wildflowers via fire access tracks. *There are no picnic areas, or other facilities, and camping is not permitted.* Do not take pets as baits are laid in the reserve to protect the native wildlife from feral animals.



The **Orchid Walk** is delightful in spring. The 1.5 km grade 2 trail (gentle slope, easy walking) leads through open woodland surrounding a very low (1 to 2 metre) sandy gravel ridge. There are many orchids, cat paws, and lots of colourful low shrubs and everlastings that change as you pass through sheoak, wandoo, and marri woodland and kwongan scrub. A few visits are needed as the flowering time of the many species varies from August to October.



To get to the (approx. 2.5km) **Sandplain Walk** drive up the (rough) main track, taking care to veer left at the fork and stop at the P sign. This is a nice spot for a picnic at the adjoining granite outcrop. The 2.5km trail is a great walk with sudden changes in vegetation and great flower spots that vary in flowering from August to December. However, there are a few steep spots and areas of rough dense bush if one deviates from the route.



The bush varies throughout this reserve, and a walk, mountain bike ride or drive (best in a four-wheel drive vehicle) rewards one with attractive changes in wildflowers and landscape.

