

CANDY BLOCK



Located 19 km north of Narrogin, Candy block is a Dryandra Woodland “satellite” block. The landscape is steeper and more varied than the main Dryandra block, with some surprising areas , unusual wildflowers, and good bird watching. Gravel roads to the two walk trails are well maintained and suitable for small to medium sized vehicles. There are no picnic areas, or other facilities, and camping is not permitted. Do not take pets as baits are laid in the reserve to protect the native wildlife from feral animals.

Candy block is named after Norm Candy, a farmer who cleared adjoining land to the north.

It is “great to be alive” country that changes from peaceful and attractive woodlands to dramatic breakaways and great views.

Use the northern access road to drive to the walks. This is an easy driving track that takes you to the walk trails via attractive open wandoo, sheoak, and powderbark

woodland where you can stop and see the lovely flowers.

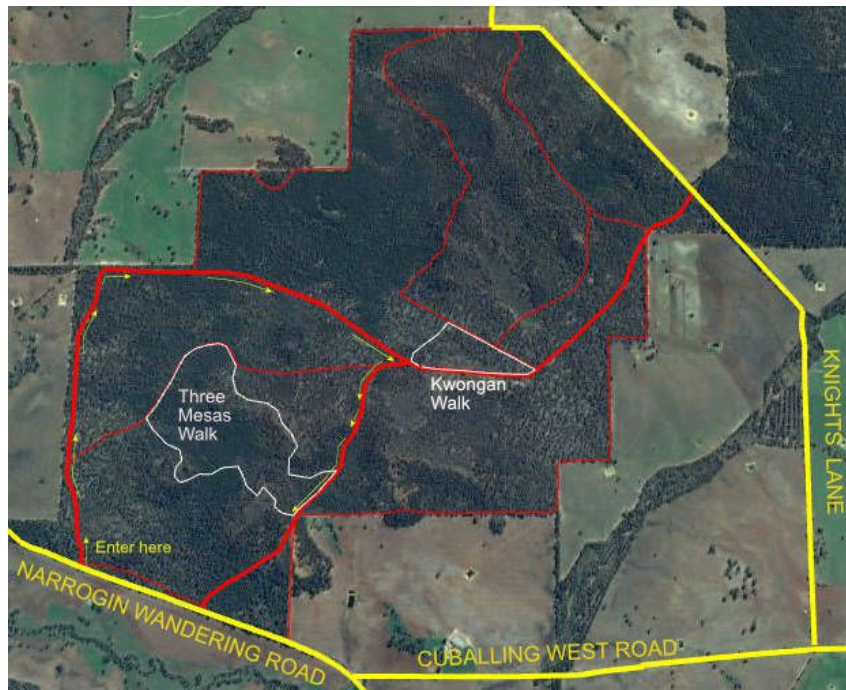
Avoid entering by the other access road due to a steep and loose gravel hill that can make cars drift to the wrong side of the road on a blind ridge and cause accidents.

The thicker red lines in the map are all weather roads suitable for all vehicles.

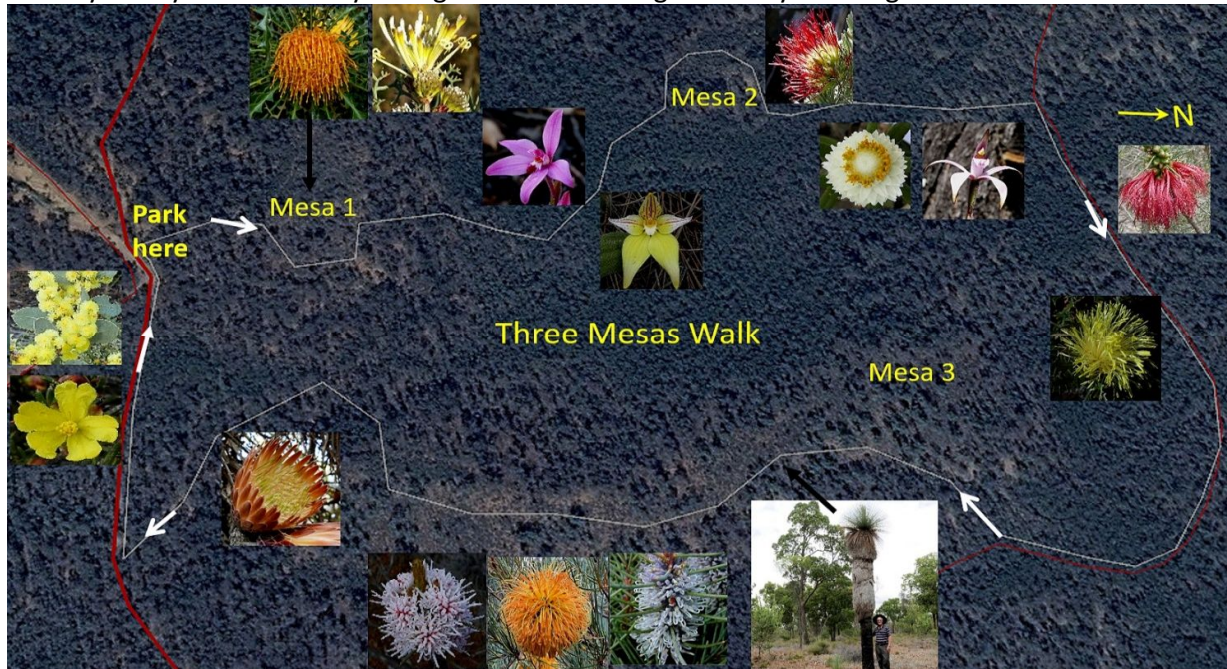
Thinner red lines are fire access tracks that may be boggy, rough, or blocked by fallen branches

Three Mesas Walk This 3.5km walk (grade 3 walk with some steep sections) meanders over three separate laterite mesas via breakaways and valleys.

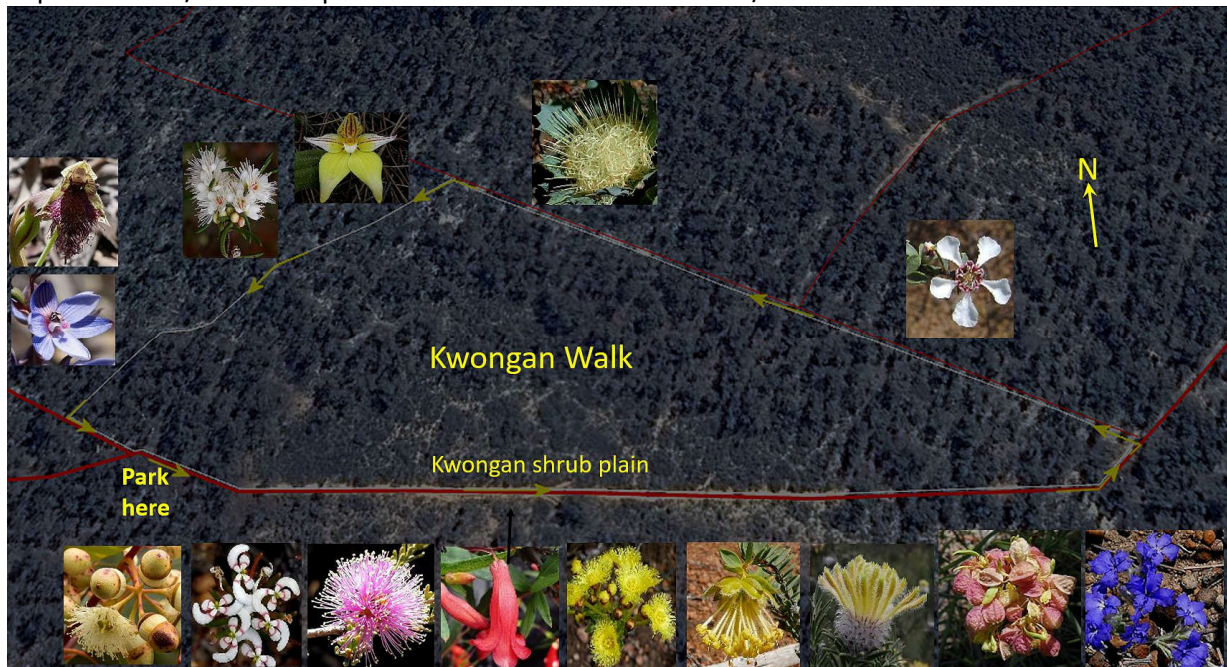
Note how the woodland and associated wildflowers vary on each mesa and different tree types. In



summer/ autumn the trees are shedding their bark, and there is always something flowering most of the year if you look closely enough. Check out the giant 400-year-old grass tree.



The **Kwongan Walk** is an easy 1.5km walk through mainly sandy soils. The highlight is yellow sand kwongan bush with a wealth of flowering shrubs that reach a peak around October. The country changes to sandy marri-parrot bush woodland with cowslip orchids and fragrant white Honey Myrtle shrubs in spring. If you are lucky you may find Frog Greenhood, Beard, and Blue Sun orchids in powderbark/ wandoos spot near the end of the walk in mid/late October



Scan this QR code for more information