

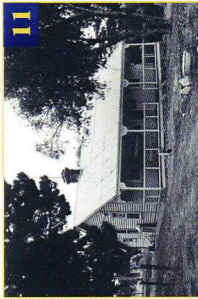
POPAYINNING Heritage Trail

POPAYINNING HERITAGE SITES

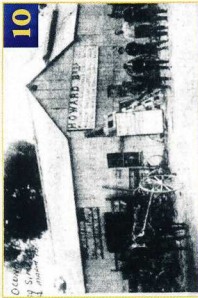
1. Fred Viewings Garage
2. The Old Post Office
3. General Store
4. The Commercial Bank
5. The Popanyinning Hotel
6. Spragg's House
7. The R.S.L. War Memorial Park
8. The Rosella Building
9. The Popanyinning Community Hall
10. The Blacksmiths
11. The School & School House
12. The Presbyterian Church
13. The Old Tennis Courts
14. The Barracks
15. The Station Masters House
16. The Railway Station
17. The Tent Village
18. Bulk Grain Handling Facilities
19. Fettle's Cottage



--- HERITAGE TRAIL



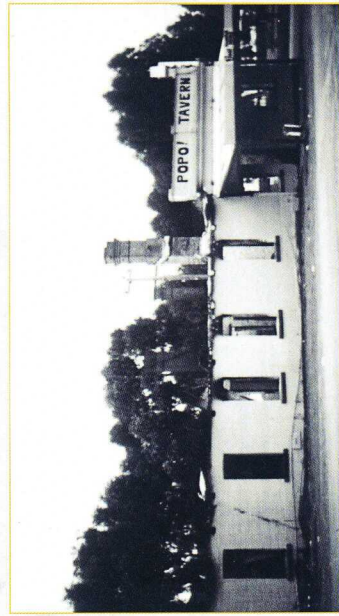
11



10

The birth of the township of Popanyinning can be attributed to both the construction of the Great Southern Railway and the desire of pioneers to settle within the perimeter of the townsite, being approximately 3.4 miles north and south and 1.4 miles east and west. Records show that the first pioneers arrived in 1893, and in 1898 pioneer railway construction workers and their families arrived.

By 1906 there were 72 families registered within the Popanyinning district. The town was basically built for agricultural conveniences so that surrounding settlers could come and buy their monthly supplies from the local shops and for the use of the railway facilities. Once there were many shops in the main street, such as a Blacksmith's, General Store and Post Office, Mixed Goods Store and a Bakery. On 2 April 1906 the Popanyinning Hotel was officially opened. It was very successful for many years, until 9 July 1978 when it sadly burnt down. The Hotel has never been replaced.



Staying in Popanyinning?

Hard to say - Nice to Stay

ACCOMMODATION

Popanyinning B&B 9887 5033
 Lazeway Caravan Park 9887 5027
 Cuballing Tavern 9883 6032
 Popanyinning Oval 24hr stay
 Self sufficient

EATS

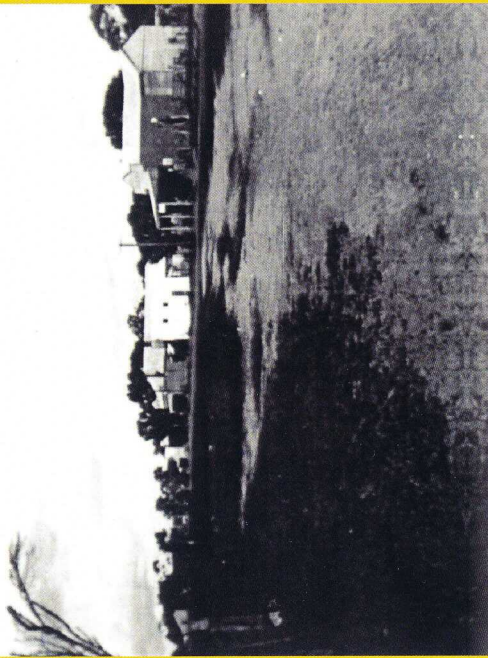
Popanyinning General Store 9887 5033
 Cuballing Roadhouse 9883 6026
 Cuballing Tavern 9883 6032

3



SHIRE OF CUBALLING
 22 Campbell Street, Cuballing WA 6311
 PO Box 13, Cuballing WA 6311
 P: (08) 9883 6031
 E: enquires@cuballing.wa.gov.au

Hard to say - Nice to Stay



Popanyinning was originally named 'Popaning' which stands for waterhole in the Aboriginal language. The name came about from a large waterhole that was situated just outside of the town. The waterhole was used by Aborigines and wild brumbies from around the district. Years later the name was changed to Popanyinning, but no-one is really quite sure of why.