



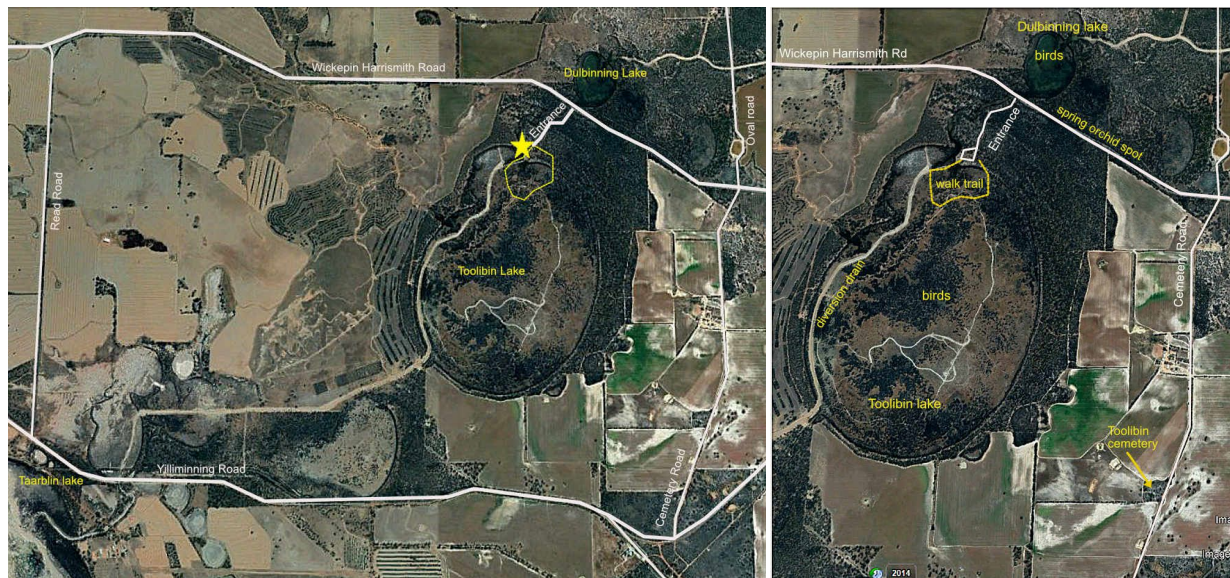
TOOLIBIN LAKE

April-November
Waterbird habitat
when water in in the lake

Located 37 km east of Narrogin, Toolibin Lake is an ephemeral wetland, meaning it only has water in some years. When the wetland is full its woodland trees, sheoak (*Casuarina obesa*) and paperbark (*Melaleuca strobophylla*) are partially submerged in water.

At the lake there is an interpretative walk trail, a picnic area and toilet, but camping is not permitted. Do not take pets as baits are laid in the reserve to protect the native wildlife from feral animals.

For a day trip, consider a 90km round trip back to Narrogin via Wickepin to see Albert Facey House, and perhaps try the Wickepin Hotel's famous lamb burger



The lake

A huge amount of replanting and engineering work under the toolibin lake management plan has been done to save the lake from becoming saline. Compare Toolibin with the impressive nearby saline Taarblin lake that was also fresh until the 1950s. A discovery walk on the lake highlights its features and the work done to preserve it.

Recovery Walk ... see some solutions to salinity

Class 2, 1.6km loop
Allow 45 minutes when the lake is dry.

- ❖ Observe how the vegetation changes along the walk.
- ❖ Look for lichen on trees that marks high water when the lake floods.
- ❖ Imagine water depths reaching over your head.
- ❖ Watch for old nests used by waterbirds when the lake floods.
- ❖ Discover some of the engineering solutions to altered hydrology along the walk.

Enjoy the Toolibin experience
If the lakebed is flooded, you will not be able to complete this walk.
However, you can still see the inflow channel, separator gate and vegetation around the lake edge.

Department of Parks and Wildlife

Bird watching

The wetland has some of the richest habitat found in the region and provides a home for many kinds of plants and animals including waterbirds. An impressive 41 species of waterbirds have been recorded at the wetland, including rare species like the freckled duck. The threatened red-tailed phascogale also lives there. The lake itself only occasionally fills but smaller Dulbinning lake located in the bush on the northern side, opposite the entrance, is a more reliable winter/spring spot for bird watchers.



Freckled duck

Orchids

If you park opposite the entrance, there is a September/early October orchid-rich strip of bush on the east between the firebreak and the Wickopin Harrismith Road.



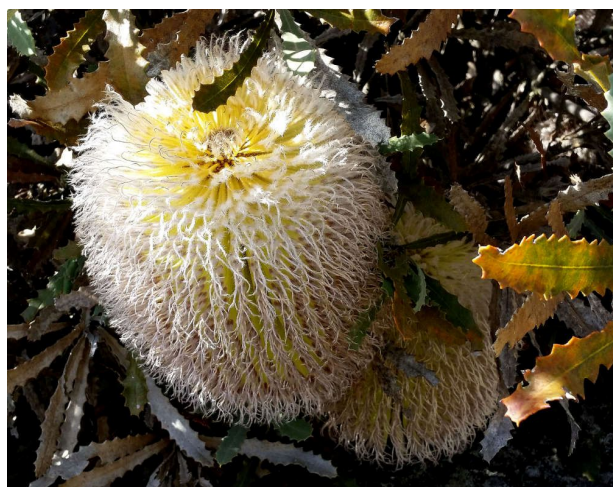
Caladenia douthiae



Caladenia hirta subsp. *hirta*

Toolibin cemetery and sandplain wildflowers

An extra 8km of unsealed road goes past the quaint Toolibin cemetery and attractive winter/spring sandy wildflowers overlooking the lake. Scan the QR code for details.



Woolly Banksia May Toolibin Cemetery



Unmarked grave Toolibin Cemetery



Toolibin blog