



YORNANING DAM

Great for a picnic
in the bush

The dam is 24km north of Narrogin. Turn west on the turnoff from Great southern Highway. Yornaning dam reserve is a great birdwatching, wildflower, and picnic spot. With picnic tables, gas BBQ and playground beside the scenic Yornaning dam, this is a great spot for a picnic for most of the year. It has easy bushwalks, bird watching, cycling, and winter/spring wildflowers. Two mountain bike circuits begin near the entrance to the dam. There is a toilet and a gas BBQ. Dogs on leash are welcome but camping and fires are not permitted.

Great Bird Watching

The dam is a great place to see our native birds, including seasonal water birds. Keep an eye out for splendid wrens in the shrubs surrounding the dam.

One of the cheekiest inhabitants of the Yornaning Dam area is the rufous tree creeper, which thrives in the open woodland. Hopping sideways up the trunks and branches of trees in search of food, probing into cavities under loose bark with their downward curving bills they search for food, but you get the impression they are having a lot of fun doing it! They are on the hunt for delicious insects and their larvae, but if you are an ant take cover. You are their favourite snack!

Listen for their distinctive “spink” call.



Rufous tree creeper courtesy R.Playle

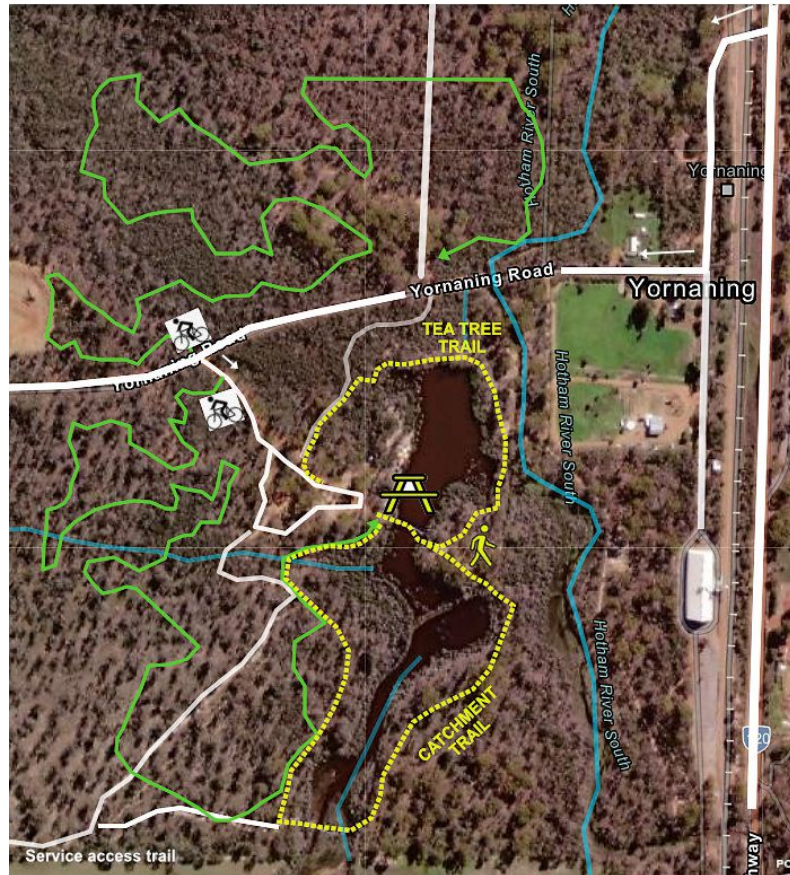


Splendid wren male courtesy C. Bartram

Spring Wildflowers

Check out the orchid spot adjoining the Tea Tree Trail in August/September for Cowslip, Little Pink Fairy, Green Spider, Primrose Spider, Blue China, Blue Fairy, and Greenhood Orchids.

The open woodland to the east of the southern walk has a lovely display of Custard, Pouched Leek, and Scented Sun orchids with other wildflowers in early October.



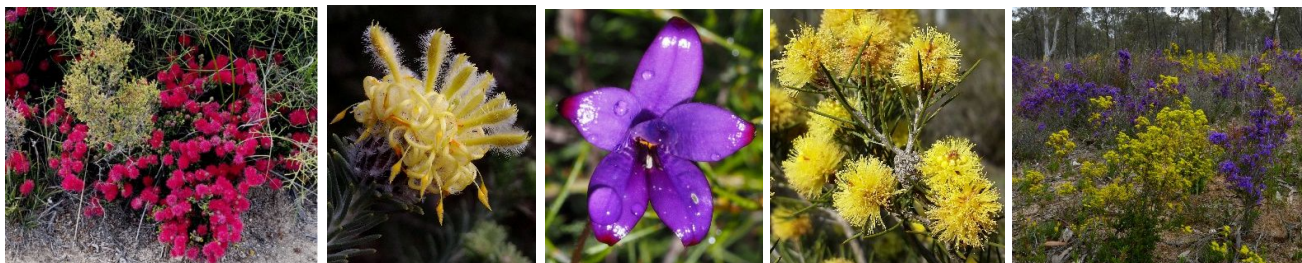
Walk Trails

Two grade 2 walk trails begin and end at the BBQ.

Tea Tree Trail is a 500-metre easy walk around the dam, which gives a view of the dam and its resident birds and turtles in the water and fringing tea tree bush shrubs. Look for wildflowers in the wandoo-rock sheoak woodland from July to October.

Catchment Trail is 1.2km walk, which passes the diversion dam that separates fresh and saline water and tall Salmon Gum Forest before entering Wandoo / Rock Sheoak woodland. This is good country for spotting Rufous Tree Creepers and echidna diggings. In late September- Early October look for beautiful yellow Custard Orchid, pink Verticordia flowers.

A 5.6km return fire access road, which begins at the parking area gate enables walkers and comfort bike riders to see interesting variations in wildflowers and bushland on the southern boundary.



Mountain Bike Trails

3.7km northern and 890 metre southern mountain bike trials start near the turnoff from Yornaning Road to the dam

These one-way trails are not a typical manicured tracks. Do not expect to follow a well-defined track. Riders need to adjust and follow white markers.

Blog

